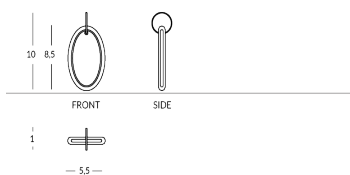


## LARA

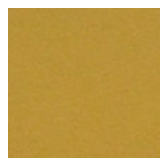
Schlüsselanhänger, bestehend aus zwei nebeneinander liegenden Acrylglasplatten. Möglichkeit, die beiden Platten gleich oder anders zu personalisieren. Stoßfester Gummiring, erhältlich in verschiedenen Farben. Lackierung nach Wahl unter den Apir-Farben oder innerhalb der gesamten RAL-Farbskala. Personalisierte Schriftart und Textfarbe. Inklusive Schlüsselring. Höhe (ohne Ring): 8,5 cm Breite: 5,5 cm Tiefe: 1 cm Gewicht: 33 g



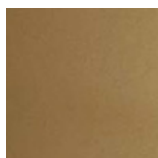
### Versione



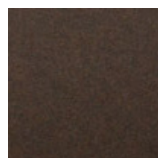
## Finiture Verniciate | Painted finishes | Finitions peintes



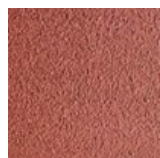
Gold



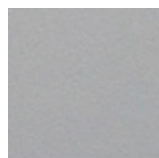
Antique Gold



Bronze



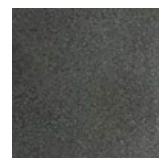
Simil Corten



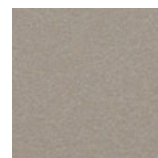
Silver



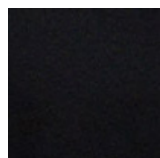
Tortora (Ral  
1019)



Canna di  
Fucile



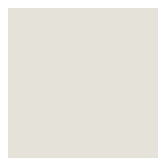
Antique Light



Matt black  
(Ral 9005)



Polished  
black (Ral  
9005)



Matt white  
(Ral 9010)



Dunkelgrau  
(Ral 7016)



Hellgrau (Ral  
7042)



Ral

## Colore protezione | Protection colour | Couleur de la protection



Gold



Schwarz



Transparent