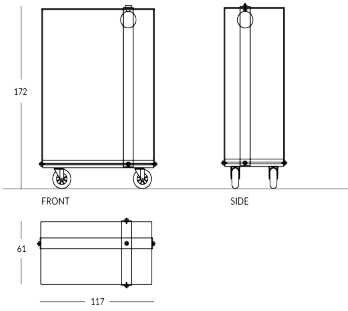


BONDY

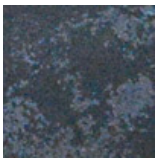
Gepäckwagen aus Eisen mit Rahmen aus Eisenplatten und Kleiderhaken. Rustikale Ablagefläche mit vier Rollen, zwei Bock- und zwei Lenkrollen, und stoßfester Gummidichtung ist. Verfügbare Ausführungen: - Industrieller Stahl - Lackierung in Apir-Farben oder in jedem Farbton der RAL-Farbkarte Höhe: 172 cm Breite: 61 cm Tiefe: 117 cm Gewicht: 79 kg



Versione



Finiture Metalliche | Metal finishes | Finitions métalliques

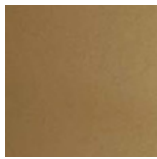


Industriestahl

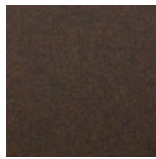
Finiture Verniciate | Painted finishes | Finitions peintes



Gold



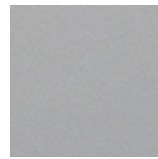
Antique Gold



Bronze



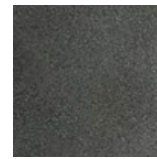
Simil Corten



Silver



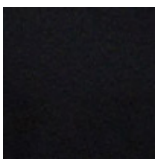
Tortora (Ral
1019)



Canna di
Fucile



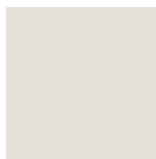
Antique Light



Matt black
(Ral 9005)



Polished
black (Ral
9005)



Matt white
(Ral 9010)



Dunkelgrau
(Ral 7016)



Hellgrau (Ral
7042)



Ral