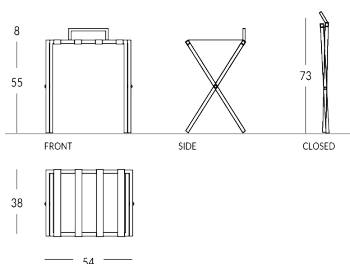


CASE/S

Personalisierte Kofferablage mit Wandschutz, klappbar. Rahmenmaterial: Metall mit Vierkantrohr und Gummifüßen. Riemenmaterial: High-Tech-Stoff oder echtes Leder, erhältlich in verschiedenen Farben. Ausführung des Rahmens: Metallic (Stahl oder Messing) oder lackiert in jeder Apir-Farbe oder in jedem Farbton der RAL-Farbkarte. Klappbarer Rahmen für eine platzsparende Lösung. Höhe (offen): 55 cm Höhe (zusammengeklappt): 73 cm Breite: 54 cm Tiefe (offen): 38 cm Gewicht: 4,2 kg



Versione



CASE/S-SML

Finiture Metalliche | Metal finishes | Finitions métalliques



Stahl
glänzend

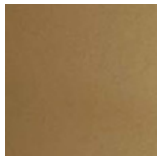


Messing
glänzend

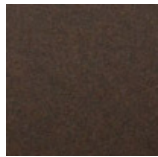
Finiture Verniciate | Painted finishes | Finitions peintes



Gold



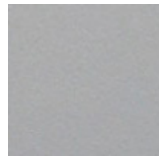
Antique Gold



Bronze



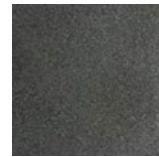
Simil Corten



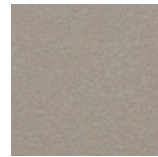
Silver



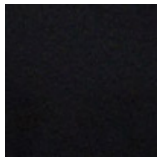
Tortora (Ral
1019)



Canna di
Fucile



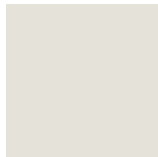
Antique Light



Matt black
(Ral 9005)



Polished
black (Ral
9005)



Matt white
(Ral 9010)



Dunkelgrau
(Ral 7016)



Hellgrau (Ral
7042)

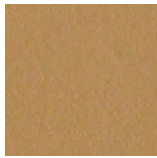


Ral

Colore Cinghie | Strap colour | Couleur de courroies



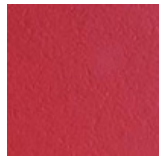
Schwarzes
Leder



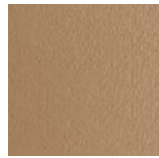
Leder



Mud Leather



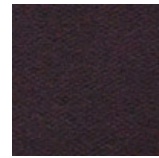
Red leather



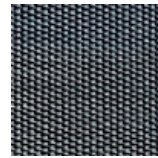
Mole leather



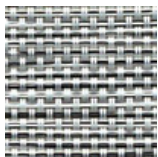
Weißes Leder



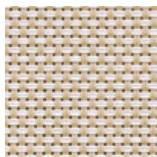
Dunkelbraunes
Leder



Hi-Tech Grey



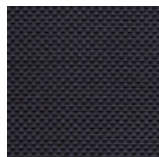
Hi-Tech Salt



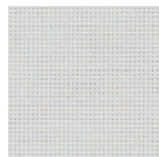
Hi-Tech Sand



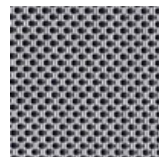
Hi-Tech
Safari



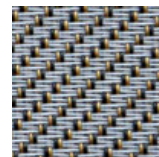
Hi-Tech Deep
Black



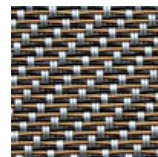
Hi-Tech White
Snow



Hi-Tech
Ipnotic Grey



Hi-Tech
Ethnic Silver



Hi-Tech
Ethnic Bronze